



**BABA QUARTZ<sup>®</sup>**  
Purity of Nature

**THE LARGEST QUARTZ MANUFACTURER IN NORTH INDIA**

[www.babaminerals.in](http://www.babaminerals.in)

# BABA QUARTZ<sup>®</sup>

## Purity of Nature

Baba Group was incorporated under the section of natural minerals powder and textiles at Kishangarh (Ajmer) Rajasthan. The director holds a good experience in the textile and minerals since last 40 years.

A unit of Baba Minerals has been established for manufacturer snow and high transparent quartz grit and filler, calcium carbonate powder and calcite marble aggregates, low iron quartz (Glass Grade) and feldspar powder.

Baba Group is the largest minerals export company in north India. Special Permission given by Govt. of India for all containers stuffed in our premises. Baba minerals provide world class facility in Research & Development according to customer requirement. Company have a good experience & highly professional team for production and quality.

We have 14 highly technic & automatic production lines and our own transportation for well in time order delivery to all around the world. Our company have 24 high gross magnet machines for control the quality. Company have 6 big warehouses with 40,000 Sq. Meter area for finished material.

Our another member of Baba Group is Tanush Micro Minerals Pvt. Ltd. Established in the year 2007 is engaged in the production of micronized calcium carbonate powder.

Calcium carbonate is a chemical compound with chemical formula  $\text{CaCO}_3$ . It is one the most useful and versatile materials used today. Pure Calcium carbonate can be produced from pure calcite lumps or it can be prepared by passing carbon dioxide into a solution of calcium hydroxide ( $\text{Ca(OH)}_2$ ). Baba groups also provides imported calcium carbonate from around the world.

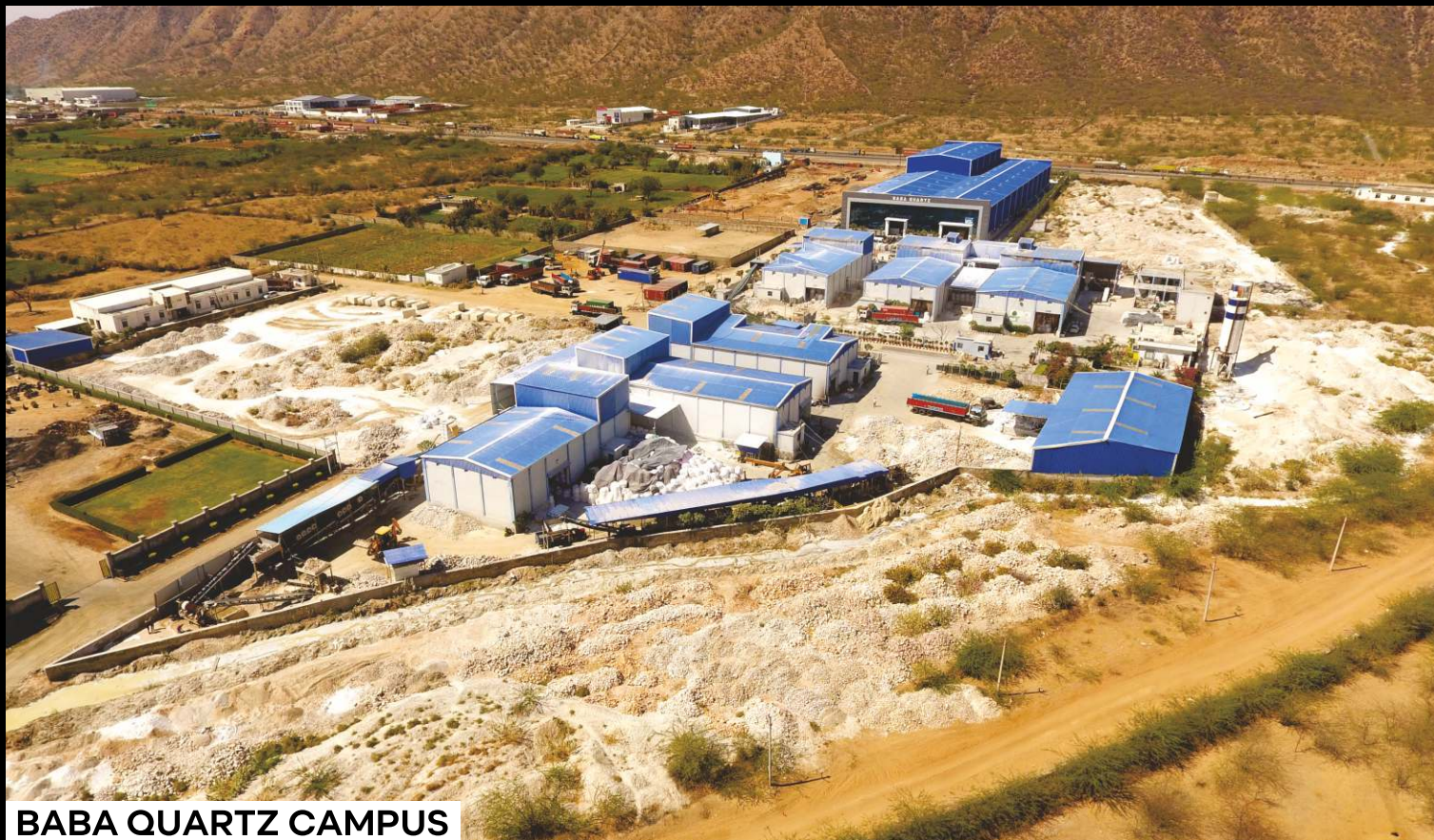
Being in the minerals industries help us extract the finest raw material from Ajmer and Makrana which is worldwide famous for its white quality and from other places in Rajasthan, which is the largest source and gifted profusely with a variety of white minerals to produce the product which will mark quality and customer satisfaction.

The Company have seen overseas offices and customer care team around the world.





# INFRASTRUCTURE



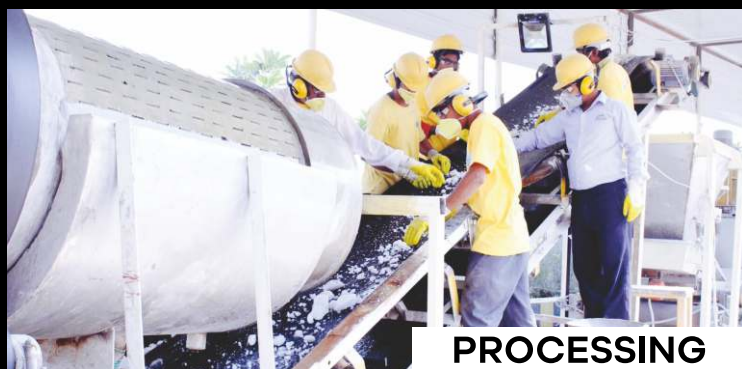
**BABA QUARTZ CAMPUS**



**QUARRY**



**RAW MATERIAL**



**PROCESSING**



**QUALITY CHECK**



# INFRASTRUCTURE





# INFRASTRUCTURE



**BABA ICD**



**STORAGE AREA**



**PACKAGING**



**CONTAINER STUFFING**



**CONTAINER LOADING**



# QA FACILITIES



**QUALITY CONTROL TEAM**



**Q.A. LAB**



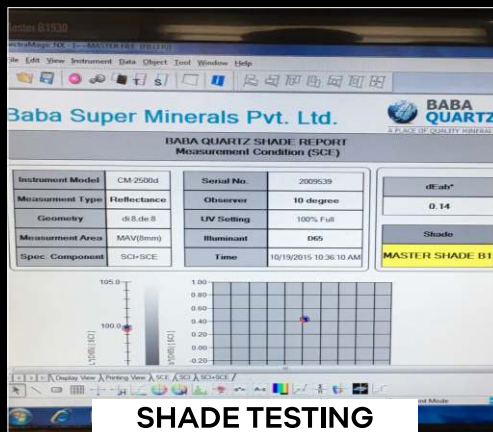
**QUALITY CHECK**



**SPECTRO PHOTOMETER**



**MOISTURE ANALYSER**



**SHADE TESTING**



**MINERAL ACID TEST**



**STANDARD SIEVES**



**QUALITY CONTROL MONITOR**



**CHEMICAL TESTING**

# PURE QUARTZ GRITS & FILLER



# PARAMETERS

## CHEMICAL PARAMETERS

|                                |       |
|--------------------------------|-------|
| SiO <sub>2</sub>               | 99.82 |
| Al <sub>2</sub> O <sub>3</sub> | 0.01  |
| Fe <sub>2</sub> O <sub>3</sub> | 0.01  |
| CaO                            | 0.01  |
| MgO                            | TRACE |
| Na <sub>2</sub> O              | TRACE |
| K <sub>2</sub> O               | TRACE |
| TiO <sub>2</sub>               | TRACE |
| MnO                            | TRACE |

## SPECIFICATION OF 1<sup>ST</sup> GRADE

| BABA<br>QUARTZ<br>SIZE GRADE |                          |                     |         |         | Color<br>&<br>Whiteness     | 1 <sup>st</sup> Grade     |                                | Free Iron | SHADE   |      |      | MOISTURE |
|------------------------------|--------------------------|---------------------|---------|---------|-----------------------------|---------------------------|--------------------------------|-----------|---------|------|------|----------|
|                              |                          | Oversize in Range   |         | Lower   |                             | SiO <sub>2</sub> (Purity) | Fe <sub>2</sub> O <sub>3</sub> |           | L*      | A*   | B*   |          |
| 0.1 mm - 0.4 mm              | Over 30# : 0             | Max 5               | Min 85% | Max 10% | Transparent                 | 99.5% Min.                | 0.01%                          | Nil       | 91      | 0.2  | 2    | 0.33%    |
| 0.1 mm - 0.3 mm              | Over 50# : 0<br>(0.4 mm) | Max 5               | Min 85% | Max 10% | Transparent                 | 99.5% Min.                | 0.01%                          | Nil       | 91      | 0.2  | 2    | 0.33%    |
| 0.3 mm - 0.7 mm              | Over 18# : 0<br>(1 mm)   | Max 5               | Min 90% | Max 5%  | Transparent                 | 99.5% Min.                | 0.01%                          | Nil       | 88      | 0.2  | 1.5  | 0.33%    |
| 0.6 mm - 1.2 mm              | Over 12# : 0<br>(1.7 mm) | Max 5               | Min 90% | Max 10% | Transparent                 | 99.5% Min.                | 0.01%                          | Nil       | 85      | 0.2  | 1.5  | 0.33%    |
| 1.2 mm - 2.5 mm              | Over 7# : 0              | Max 5               | Min 90% | Max 10% | Transparent                 | 99.5% Min.                | 0.01%                          | Nil       | 70 - 75 | 0.3  | 1.5  | 0.33%    |
| 2.5 mm - 4.0 mm              | -                        | Max 5               | Min 90% | Max 10% | Transparent                 | 99.5% Min.                | 0.01%                          | Nil       | 62 - 65 | 0.4  | 1.5  | 0.33%    |
| 4.0 mm - 6.0 mm              | Over 7# : 0              | Max 5               | Min 90% | Max 10% | Transparent                 | 99.5% Min.                | 0.01%                          | Nil       | 55 - 60 | 0.4  | 1.5  | 0.33%    |
| Filler 38 Microns            | 1% Max. on<br>(400#)     | D97 : 38<br>Microns |         |         | Extra Super<br>White 96-97% | 99.5% Min.                | 0.01%                          | Nil       | 98      | 0.25 | 1    | 0.33%    |
| Filler 45 Microns            | 1% Max. on<br>(325#)     | D97 : 45<br>Microns |         |         | Extra Super<br>White 96-97% | 99.5% Min.                | 0.01%                          | Nil       | 98      | 0.25 | 1    | 0.33%    |
| 80 - 200 Mesh                | Over 72# : 0             | Max 5               | Min 85% | Max 10% | Transparent                 | 99.5% Min.                | 0.01%                          | Nil       | 91.25   | 0.13 | 2.15 | 0.33%    |

## PHYSICAL PARAMETERS



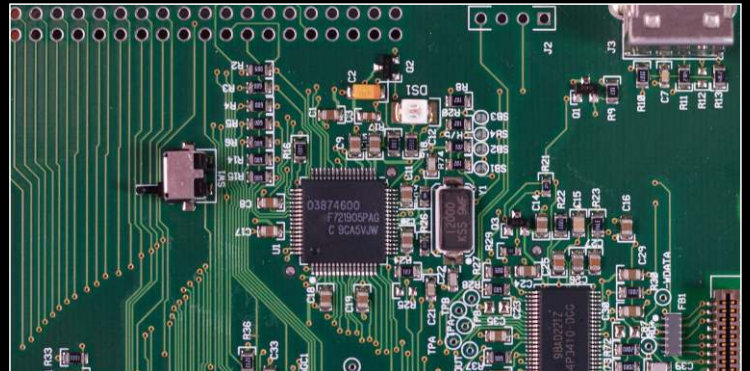


# USES

## ENGINEERED STONE



## SILICON CHIPS & SEMICONDUCTORS



## SOLAR PANEL GLASS





# USES

## SILICON METALS



---

## CONTAINER GLASS



---

## CONSTRUCTION CHEMICALS & PAINTS





# BABA QUARTZ WORLD-WIDE



## VISION



**BABA GROUP** believes that a healthy environment is not only complementary, but also critical to healthy business.

Our mission is to develop a high performance, high value products in order to satisfy our customers total needs.

**THINK GREEN**  
**SAVE THE WORLD**





# BABA QUARTZ<sup>®</sup>

Purity of Nature



**Postal Address :**

E - 4/5/6, Baba House, Laxminarayan Vihar Colony,  
Ajmer Road, Madanganj-Kishangarh,  
Dist. - Ajmer (Rajasthan), INDIA - 305801

**Office Address :**

Shri Nagar Industries Zone, N.H. - 79,  
Village - Shri Nagar, Tehsil - Nasirabad,  
Dist. - Ajmer (Rajasthan), INDIA - 305801

**E-mail :**

exports@babaminerals.in,  
info@babaquartz.com

**Website :**

www.babaminerals.in

**Tel :**

+91-9829037934,  
+91-9461281421